

TIPO "C" - SON = 28. 1.10 P.T.

- 112-117-114-115-116-117-118.
- 119-120-121-122-123-124-125
- 126-127-128-129-130-113A-114A
- 115A-116A-117A-118A-119A-120A-112A.

TIPO "C1" - SON = 11. 1.10 P.T.

- 107A-106A-105A-104A-103A
- 102A-135-134-133-132-131

TIPO "V" - SON = 4. 1.10 P.T.

- 108A-109A-110A-111A.

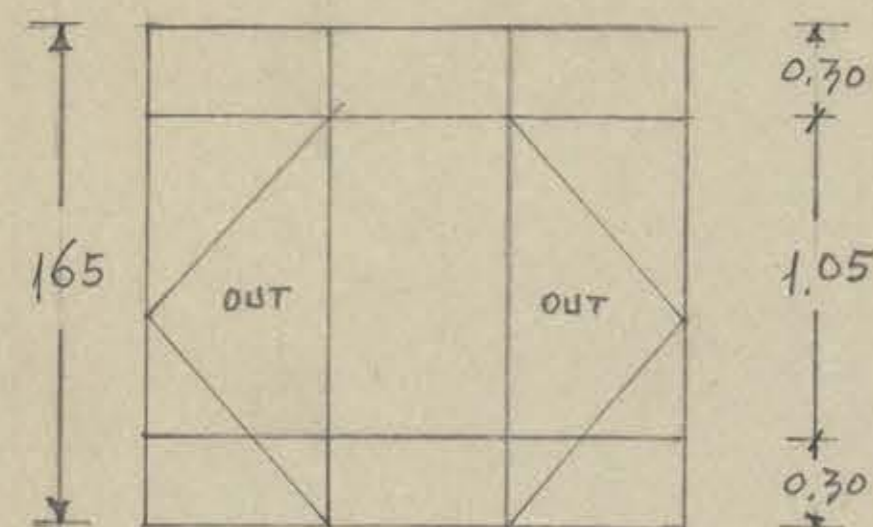
TIPO "U" - SON = 15. 1.10 P.T.

- 313A-314A-315A
- 316A-318A-319A
- 320A-309-310
- 311-312-313
- 314-315-316.

TIPO "U1" - ES = 1. (317A) - VISTA EXT.

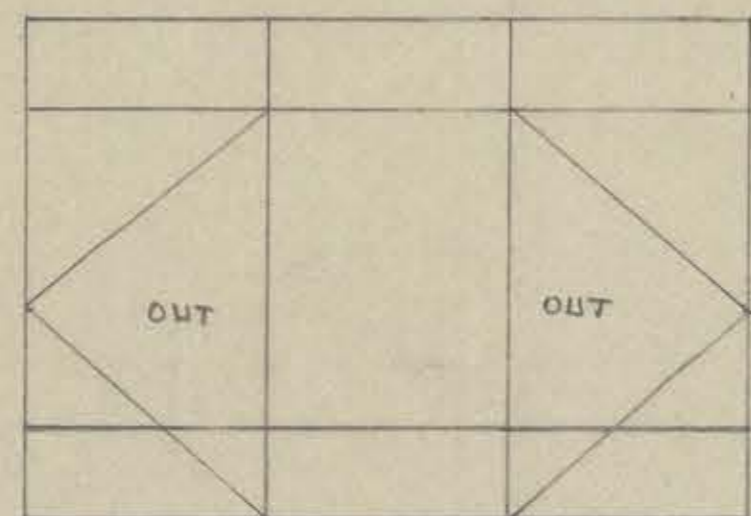
TIPO "H" - SON = 4. 1.42 P.T.

- 04-042
- 04A-034A
- (2 IZQ. Y 2 DER.)



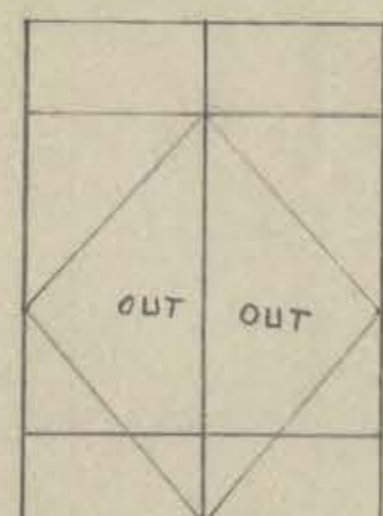
TIPO "I" - SON = 28. 1.10 P.T.

- 211-212-213-214-215-216-212A
- 217-218-219-220-221-222-312A
- 223-317-318-319-320-321-220A
- 217A-214A-215A-216A-217A-218A-219A



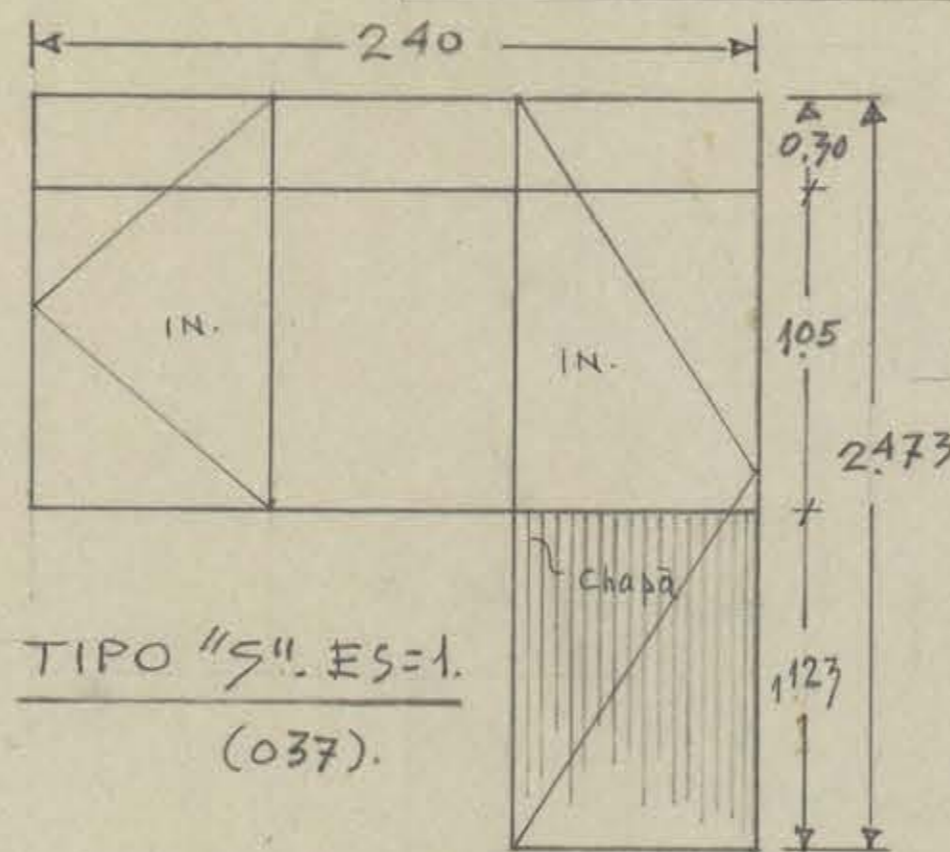
TIPO "J" - SON = 26. 1.10 P.T.

- 322-323-324-325-326-327-328-302A
- 303A-304A-305A-306A-307A-202A-203A
- 204A-205A-206A-207A-224-225-226
- 227-227R-228-229.



TIPO "T" - SON = 8. 1.10 P.T.

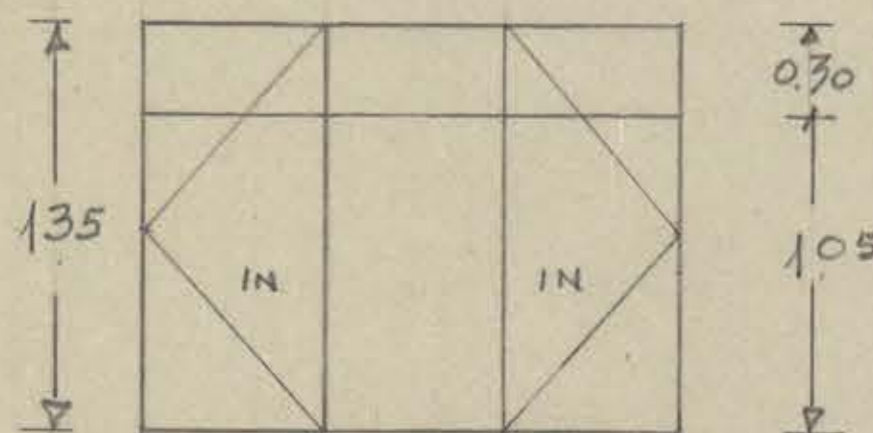
- 208A-209A-210A-211A
- 308A-309A-310A-311A



TIPO "S" - ES = 1. (037).

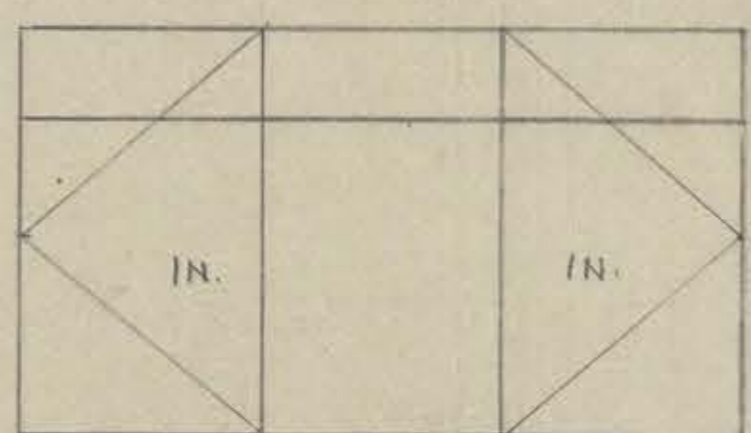
SON 2 LINEAS DE 9 VENT. DE 0.60 x 0.60 C/U. ACCIONADAS CON OP. MECANICO

TIPO "V1"



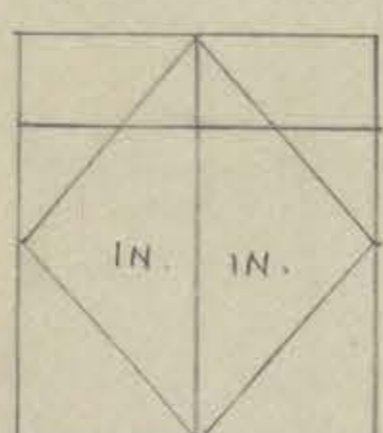
TIPO "K" - SON = 27. 1.123 P.T.

- 014-015-016-017-018-019
- 020-021-022-023-025-026-
- 027-028-029-034-035-036-
- 015A-016A-017A-018A-019A-020A-
- 021A-022A-023A



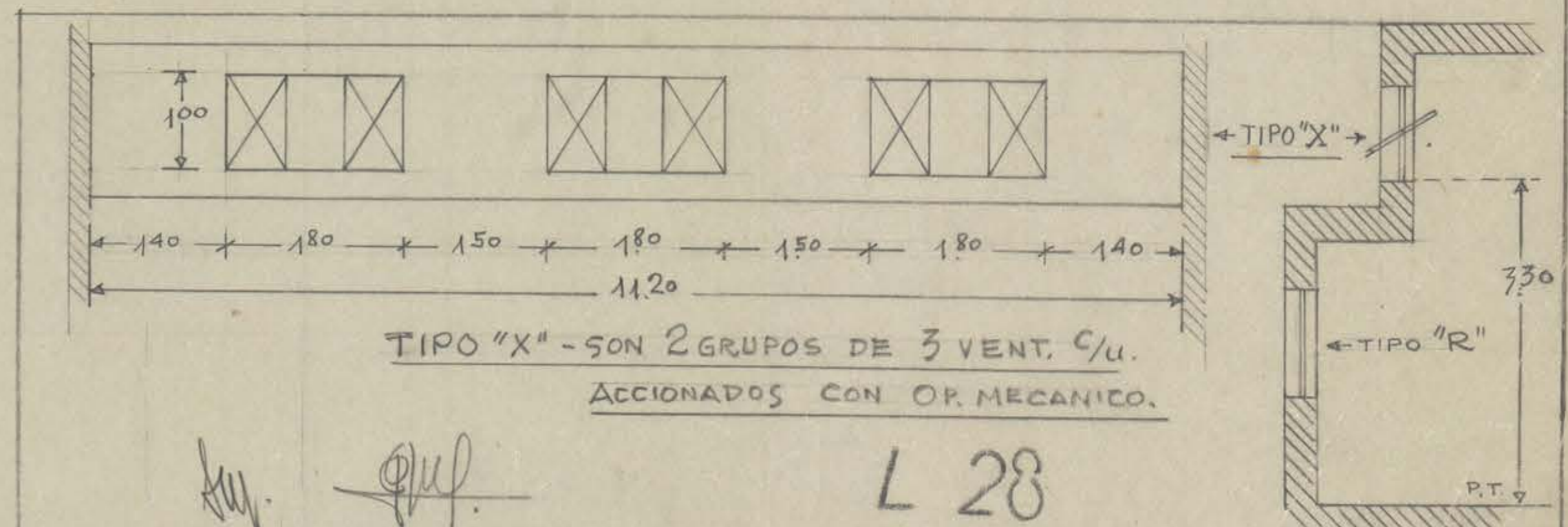
TIPO "M" - SON = 10. 1.123 P.T.

- 05A-06A-07A-08A-09A
- 038-039-040-041-010A.



TIPO "N" - SON = 4. 1.123 P.T.

- 011A-012A-013A-
- 014A.



TIPO "X" - SON 2 GRUPOS DE 3 VENT. C/U. ACCIONADOS CON OP. MECANICO.

L 28