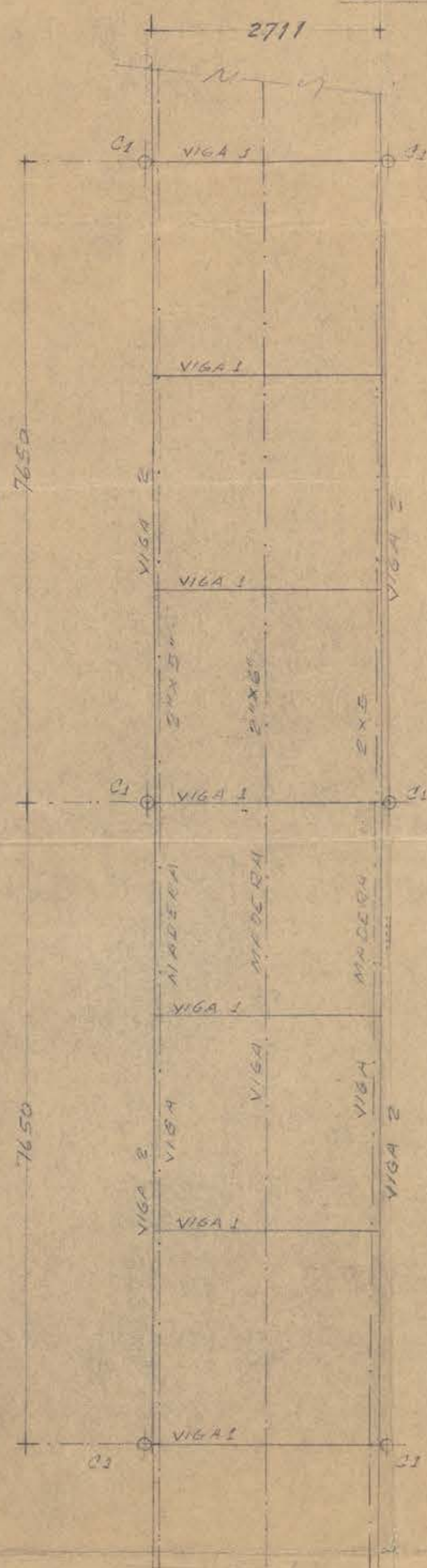
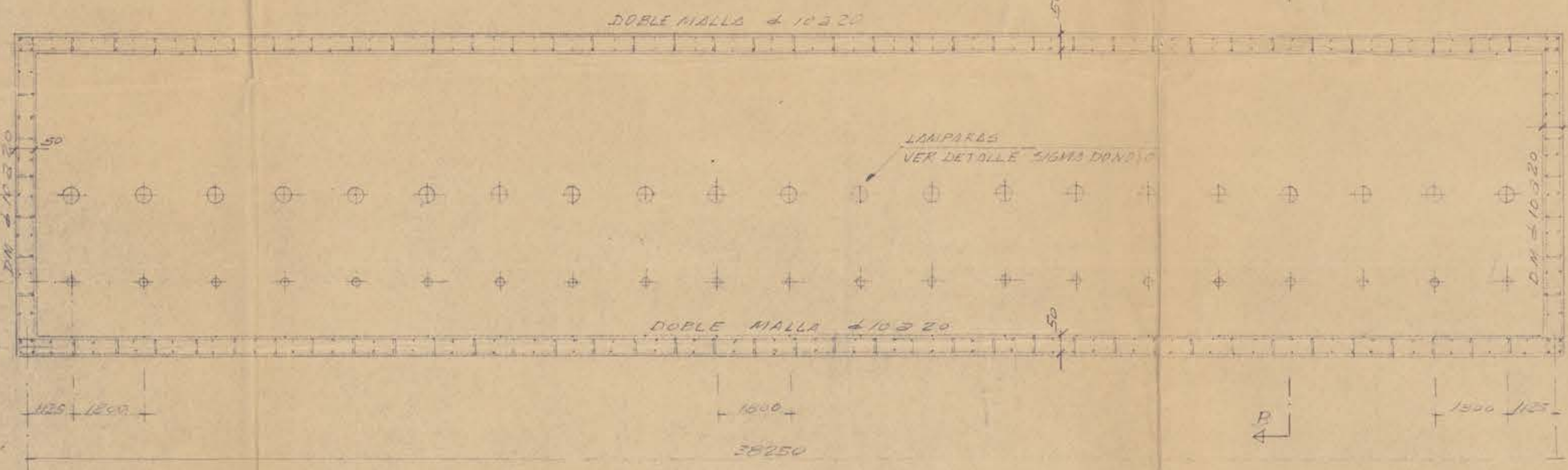


1/100
1/150
1/120
1/100

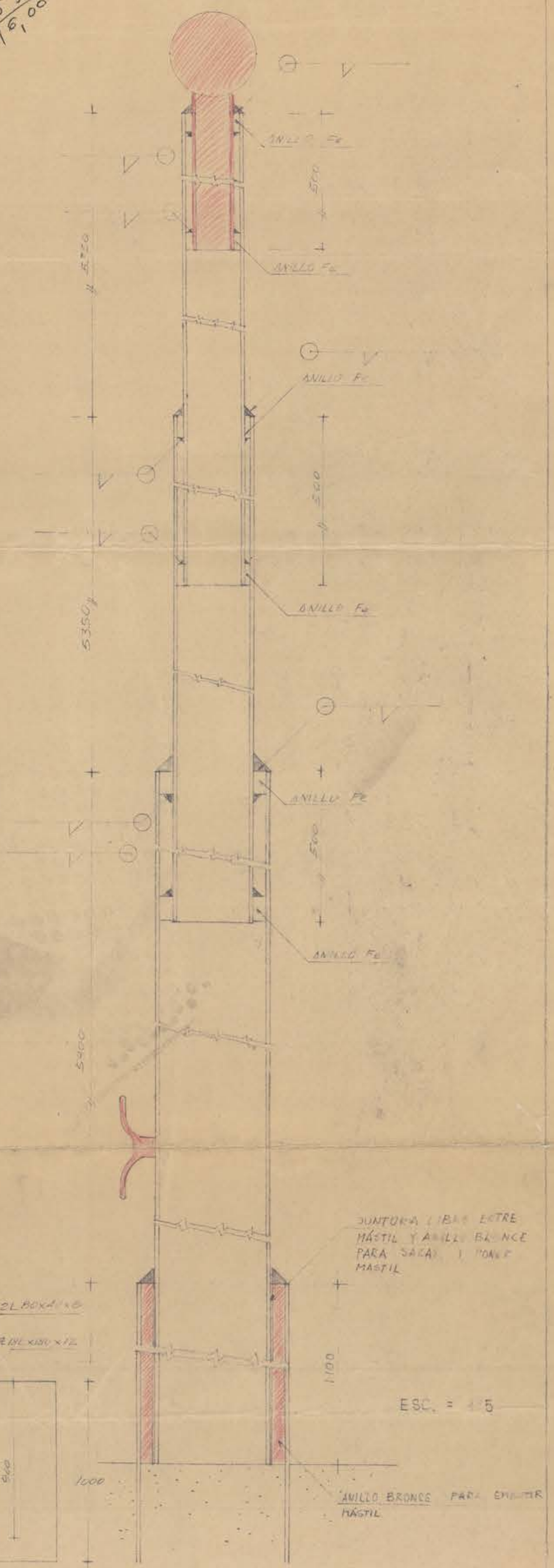
PASO CUBIERTO
Esc. = 1:50



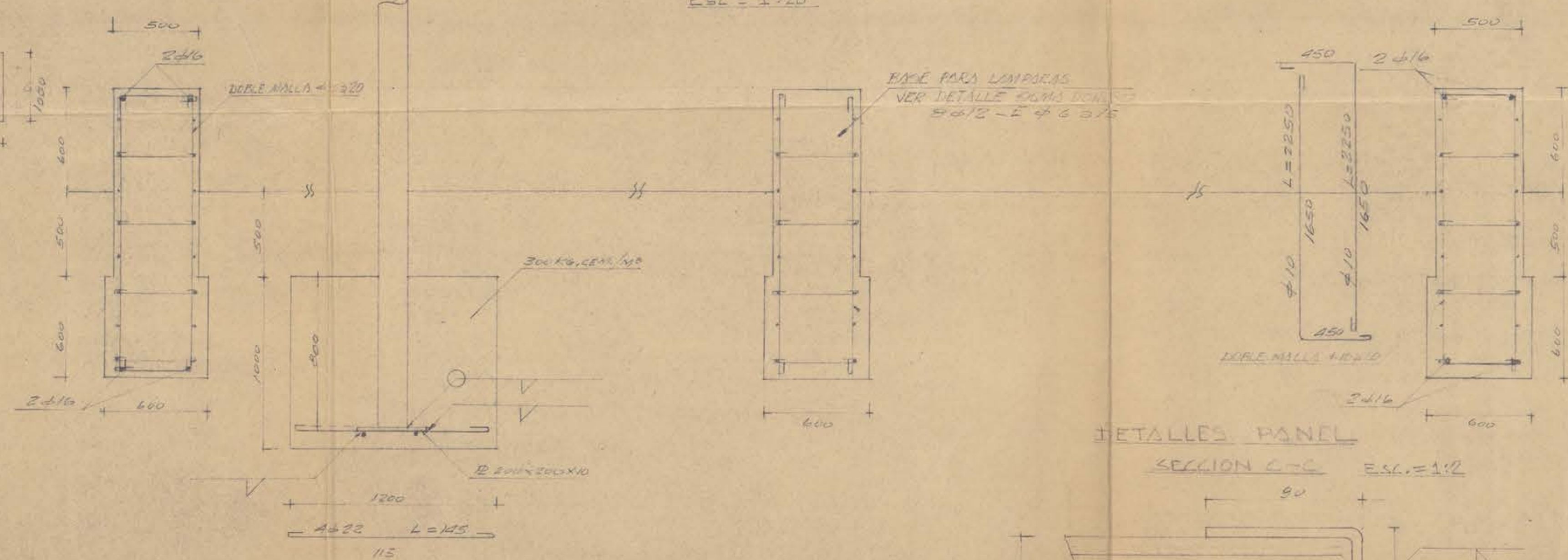
MASTILES
Esc. = 1:100



MASTIL

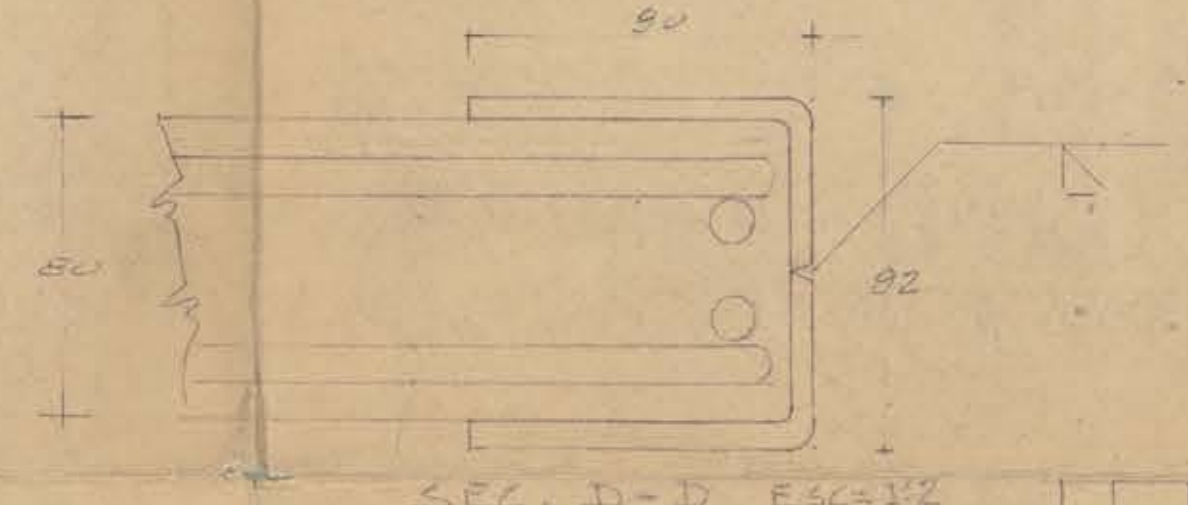


SECCION B-B MASTILES
Esc. = 1:20

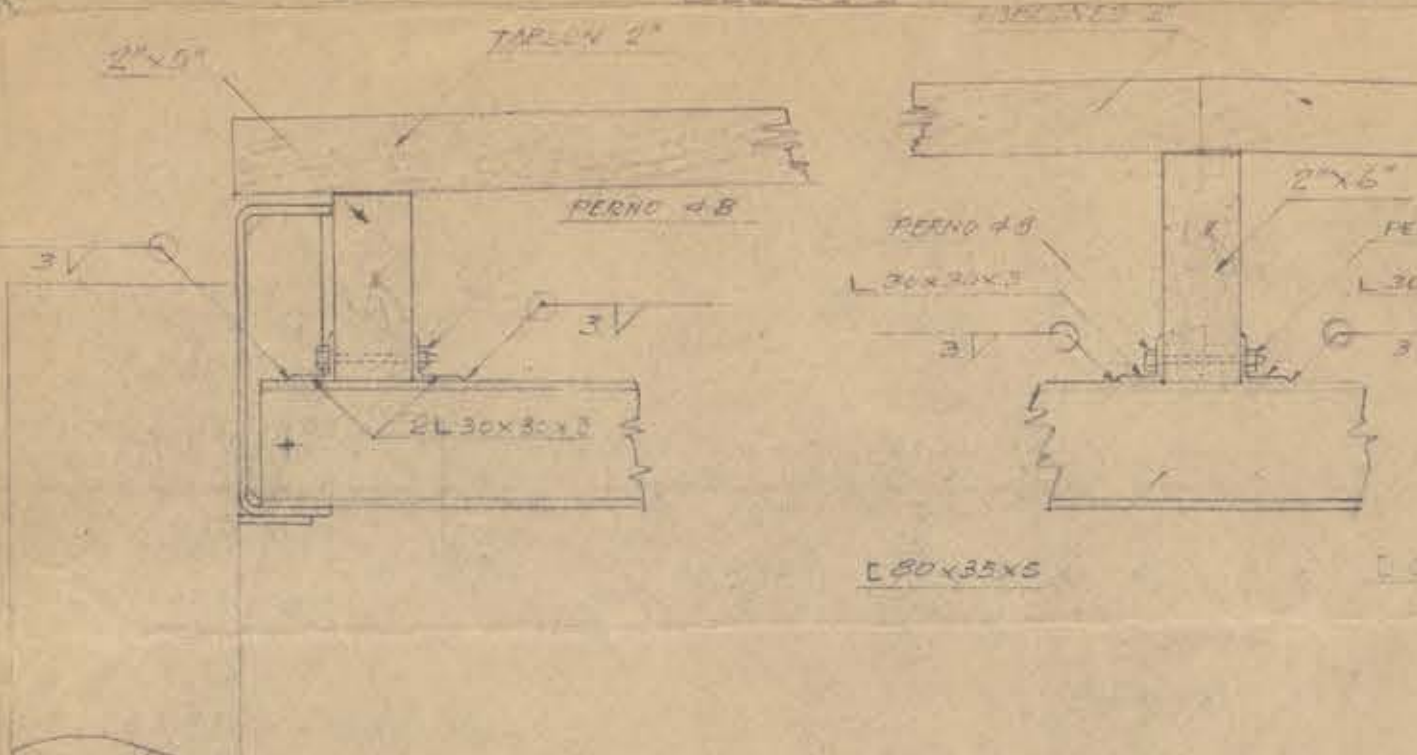


DETALLES PANEL

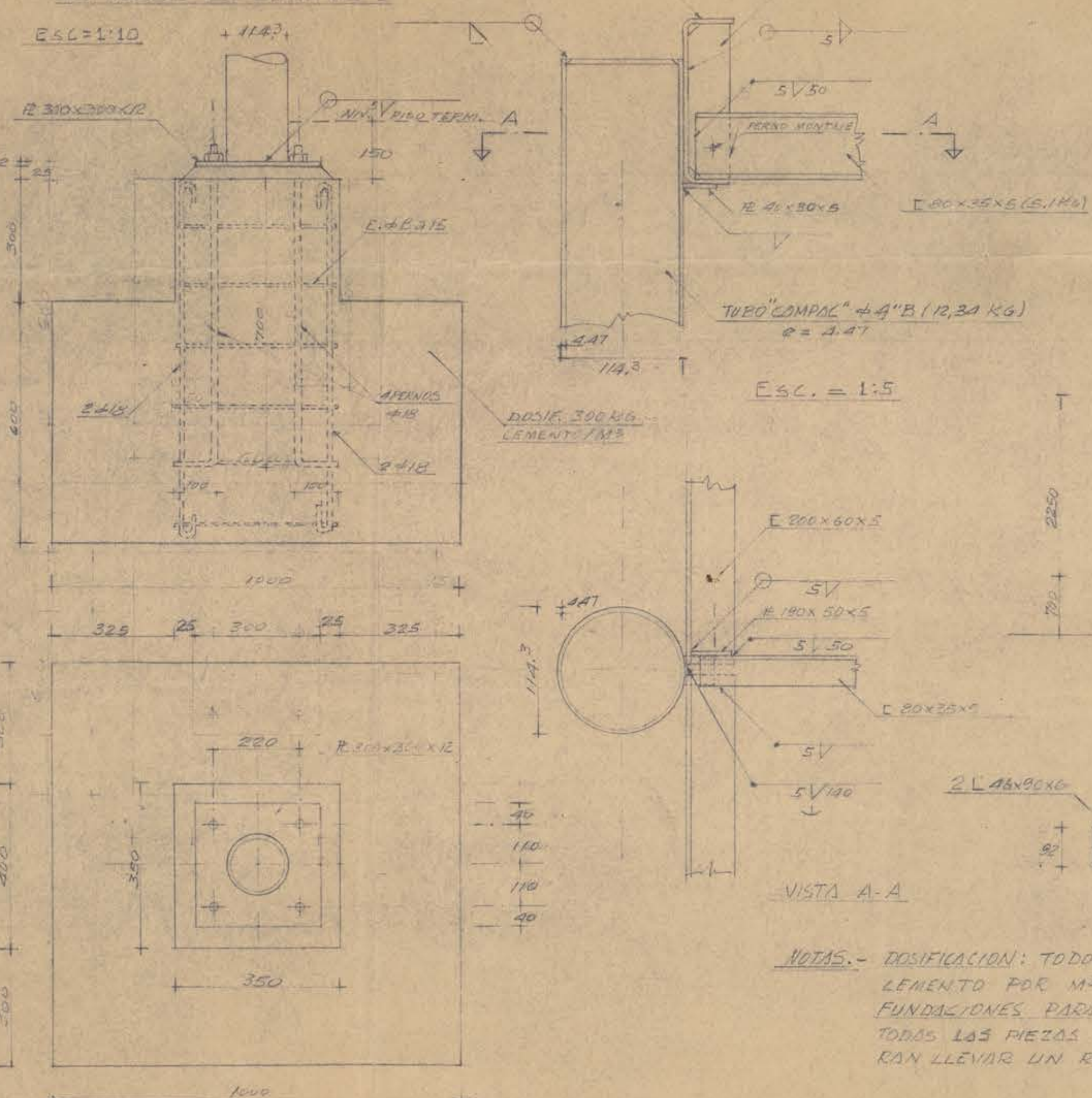
SECCION C-C ESC. = 1:2



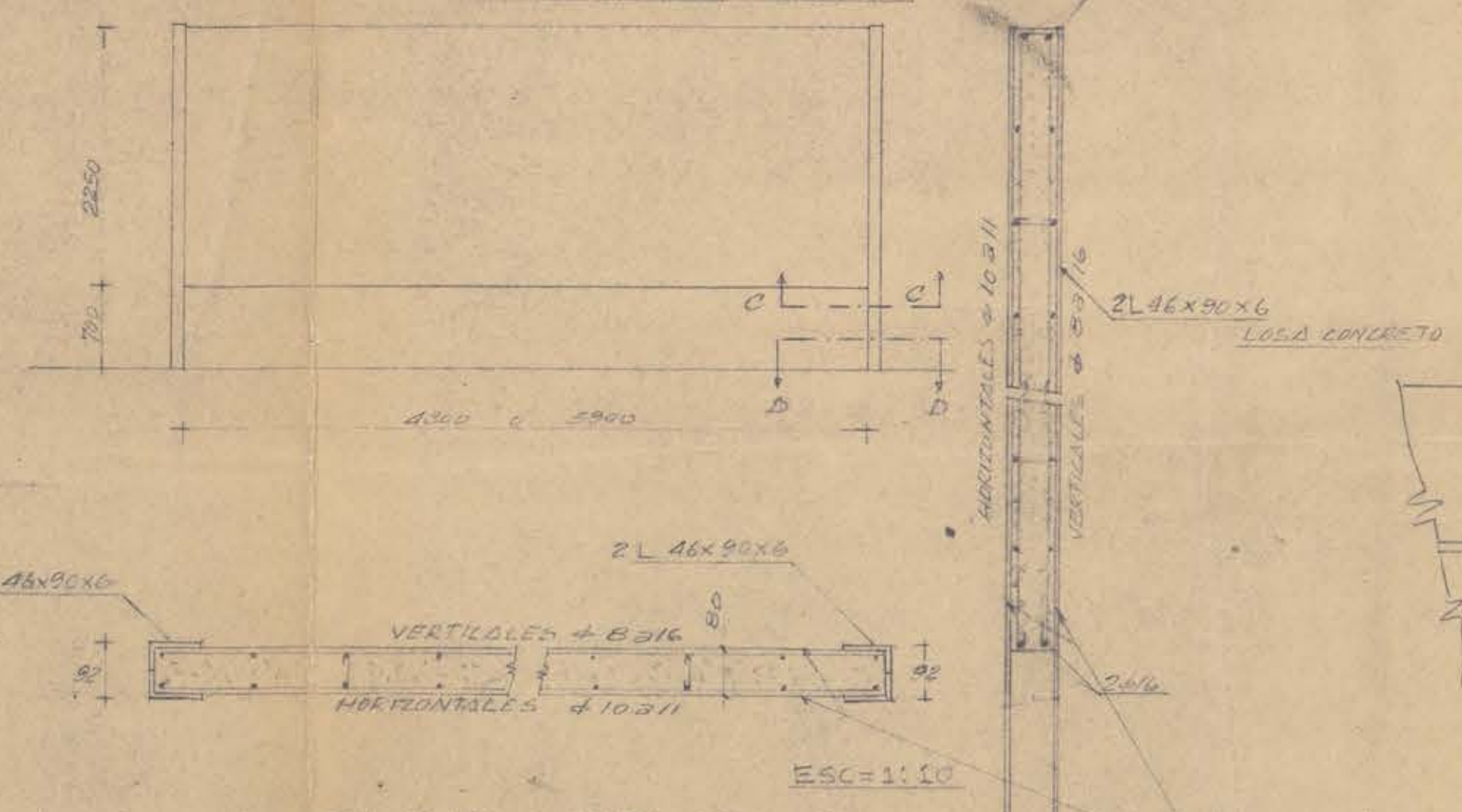
DETALLES COL. 1
Esc. = 1:5



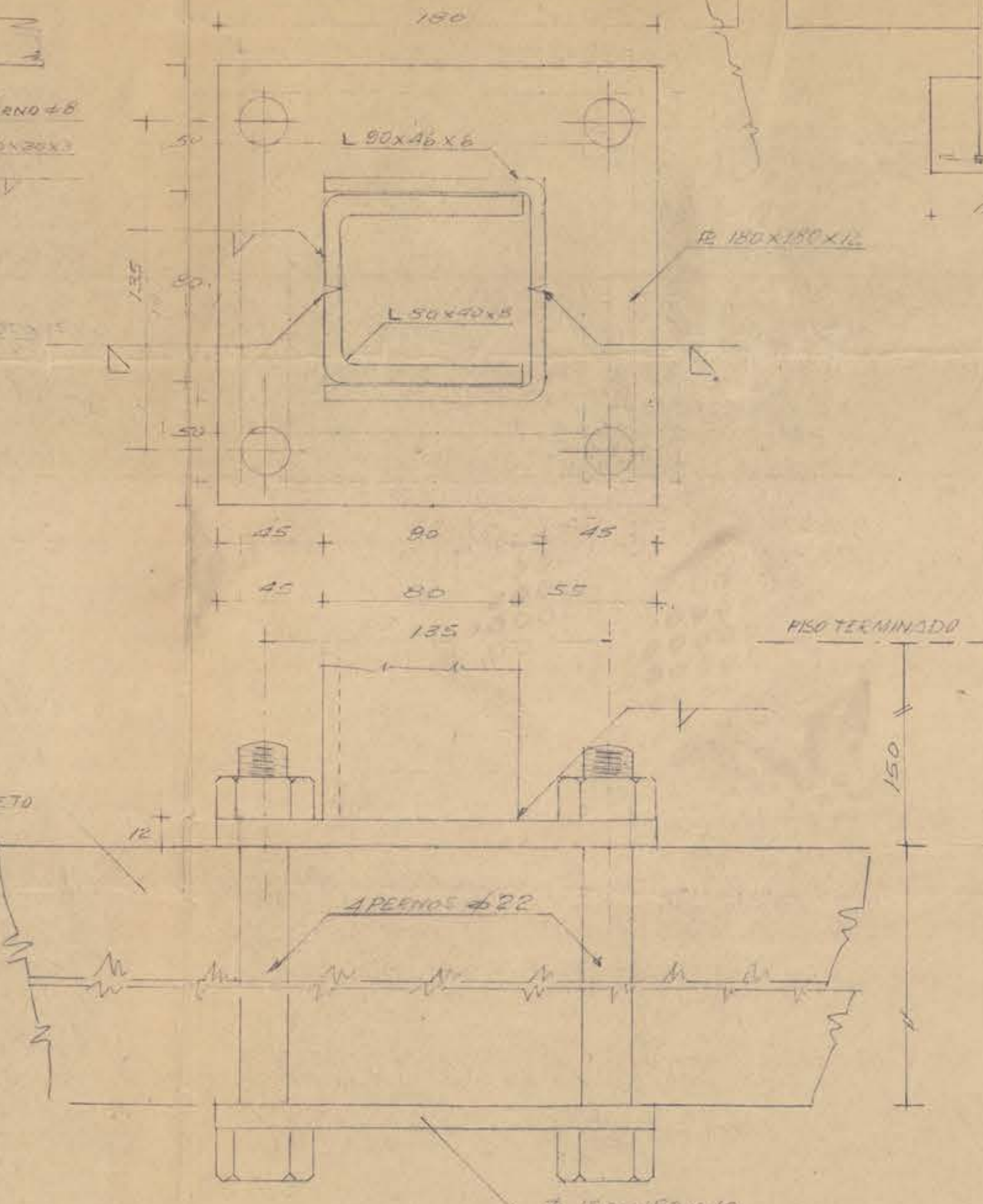
DETALLE COLUMNA 1
Esc. = 1:10



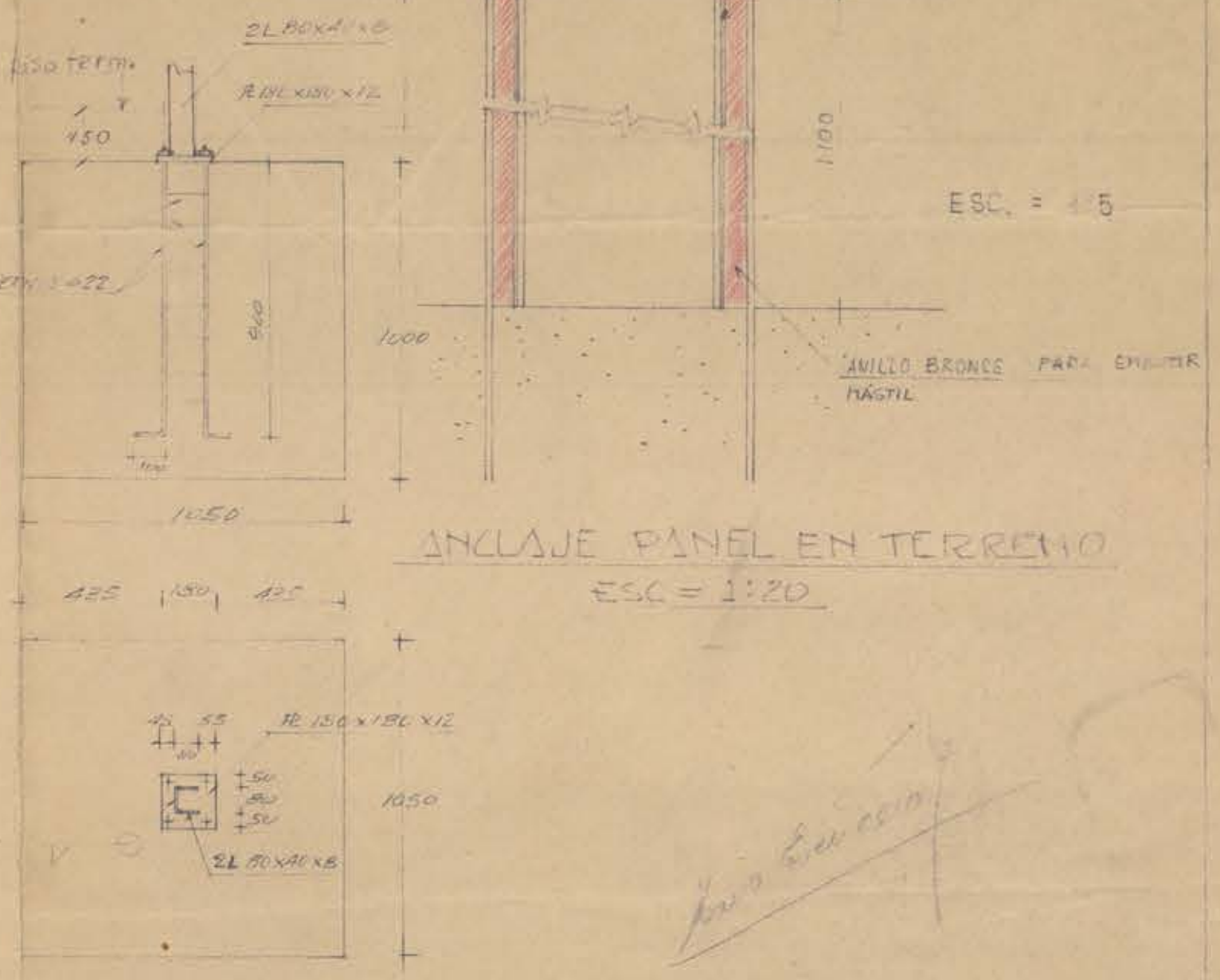
PANEL - ESC. = 1:50



SEC. D-D ESCALERA



ESC. = 1:50



NOTAS.- DOSIFICACION: TODO EL HORMIGON ARMADO LLEVARA 300KG DE LEAMENTO POR M3 DE HORMIGON ELABORADO.
FUNDACIONES PARA TERRENO DE 0.4 KG/CM2
TODAS LAS PIEZAS DE FIERRO QUE QUEDEN BASO TIERRA DEBERAN LLEVAR UN RELUBRIMIENTO ASFALTICO.

CONCRETO A LA VISTA MOLDAJE ESPECIAL ALAMO REPLLADO #1 VERTICAL SIN UNIONES

UNIVERSIDAD DE CONCEPCION
FORO ABIERTO. MASTILES, PANEL
PASO CUBIERTO - Escs. = 1:100, 1:50, 1:20, 1:10
E. GAYTER P. y M. ESCUDERO X. - ING. CIVIL
SANTIAO, 9 DE ABRIL DE 1978