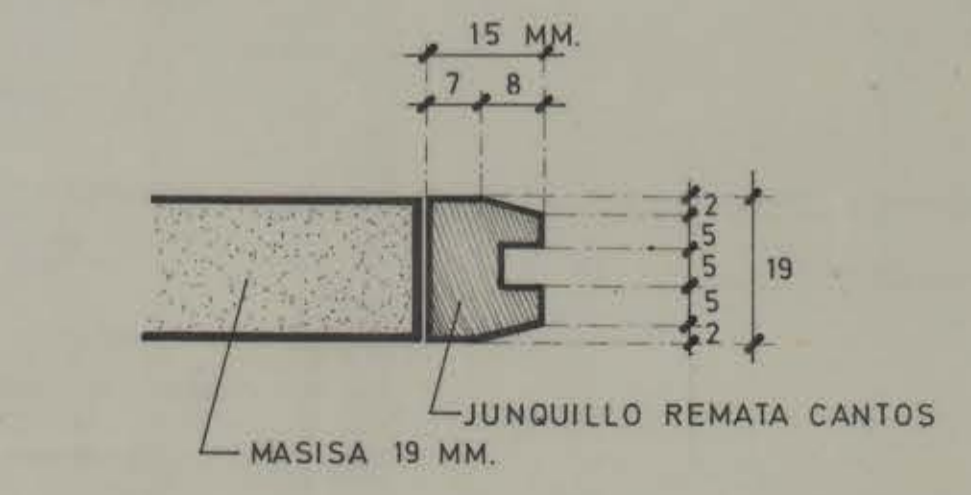
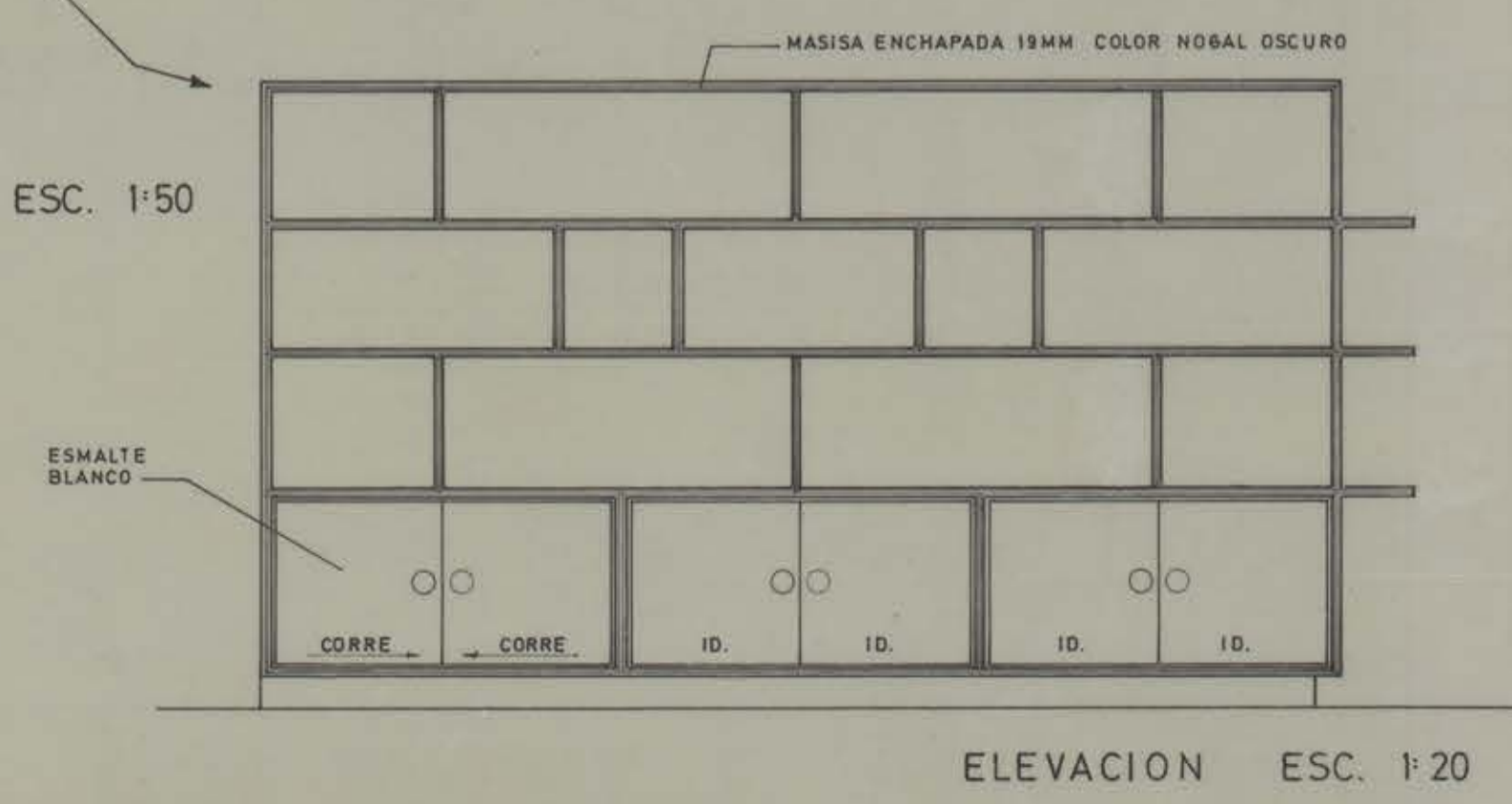
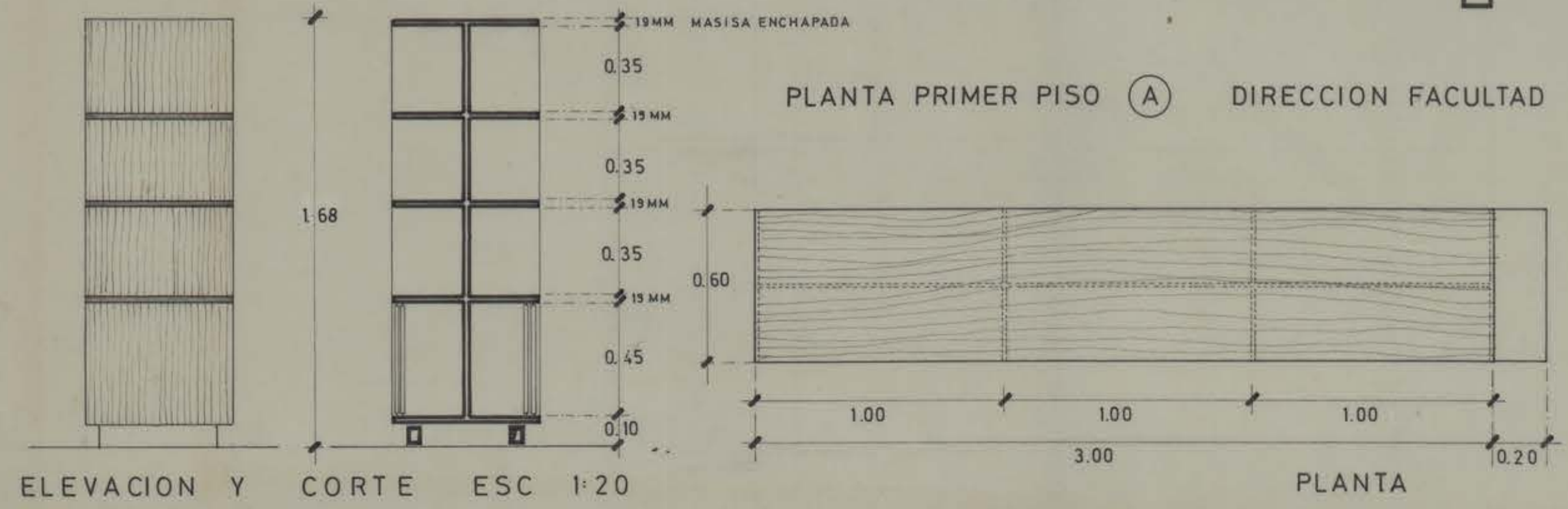
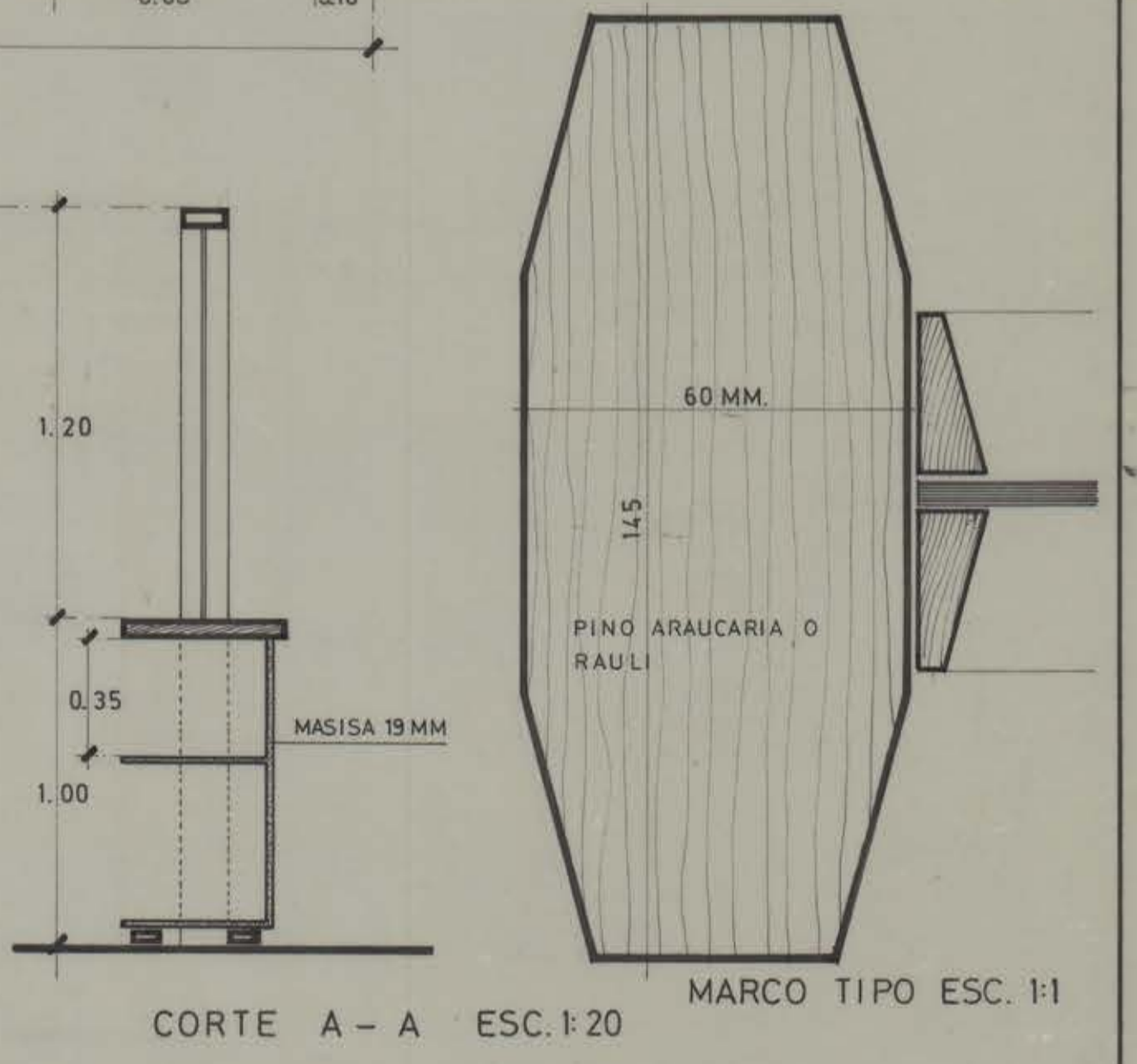
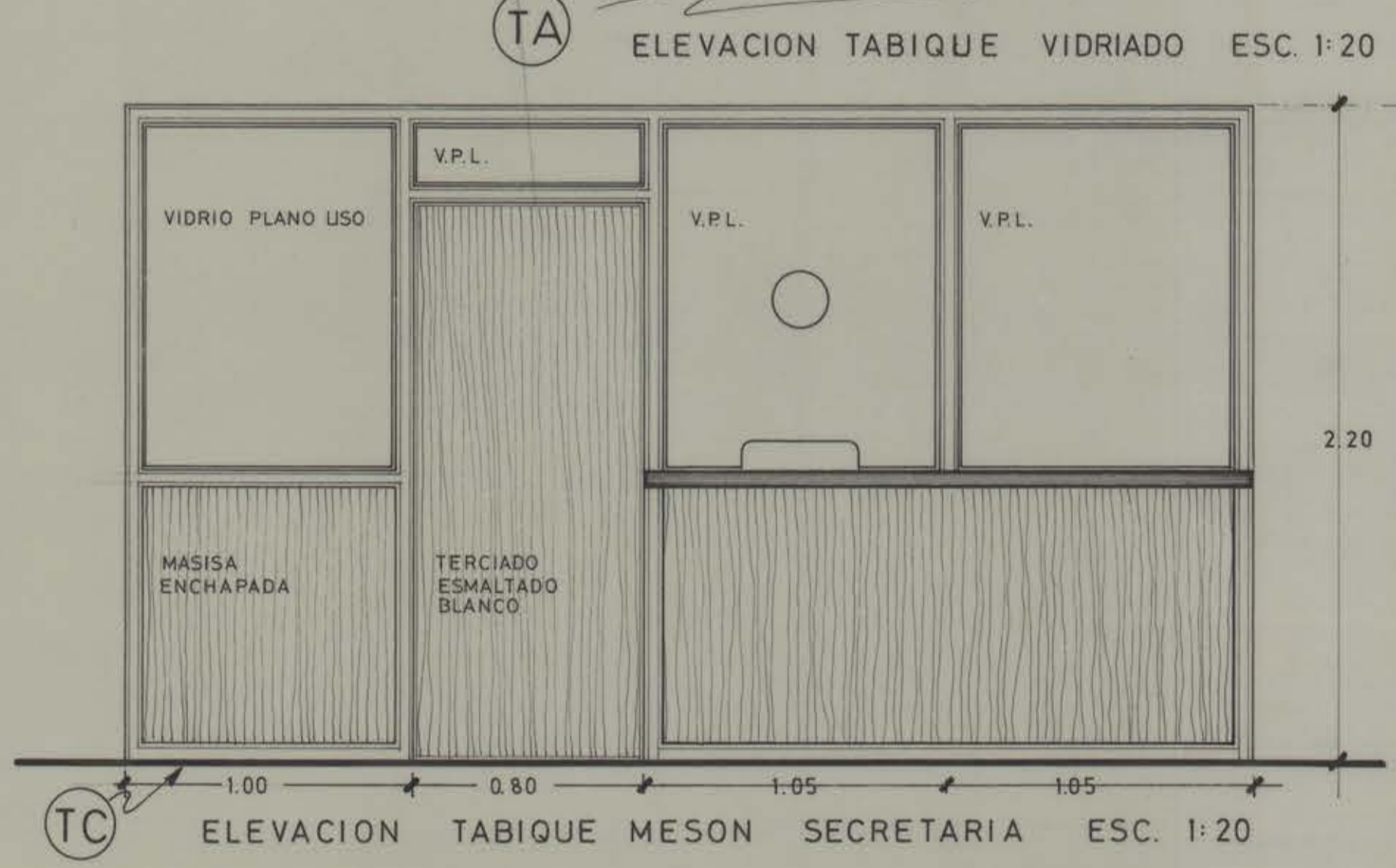
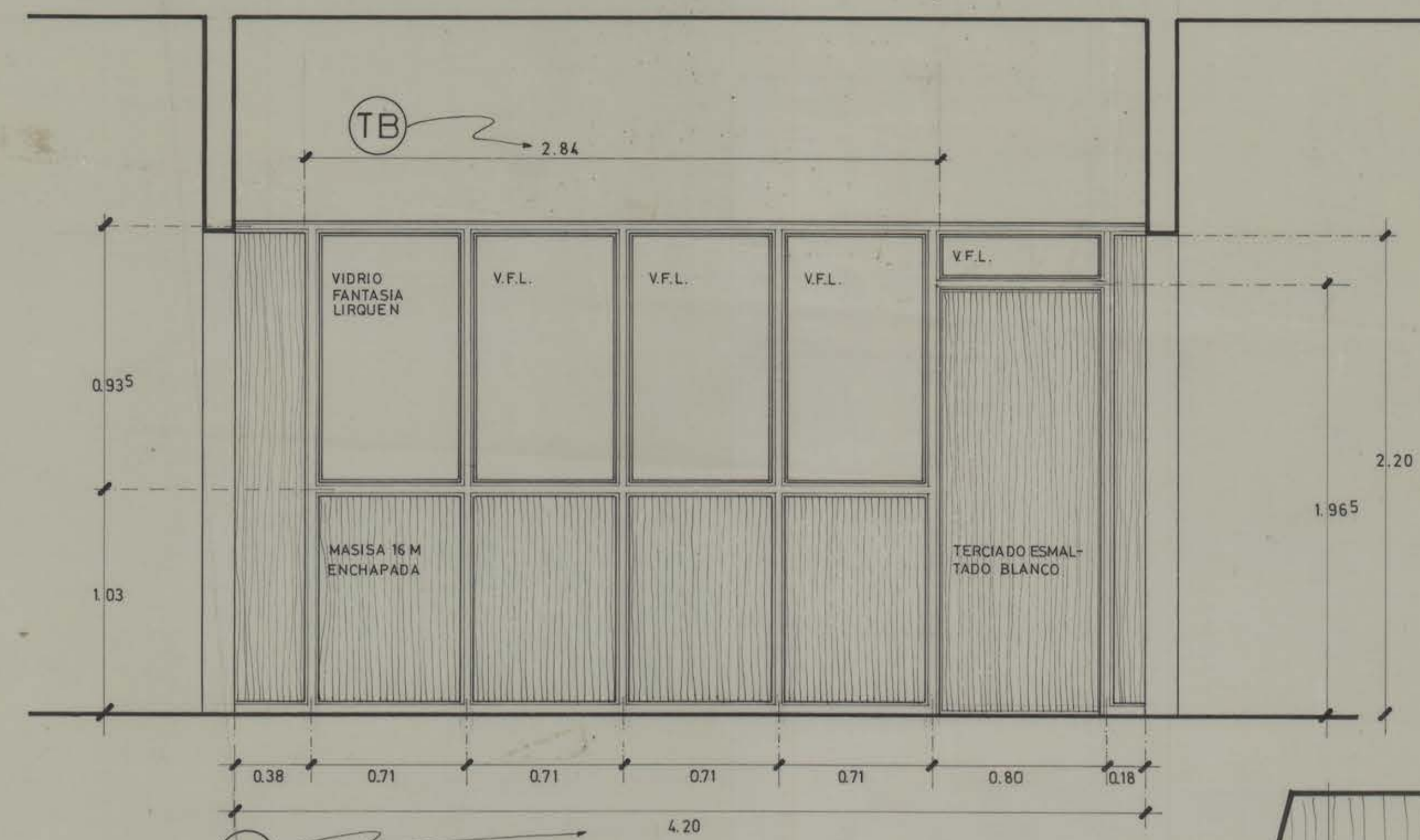
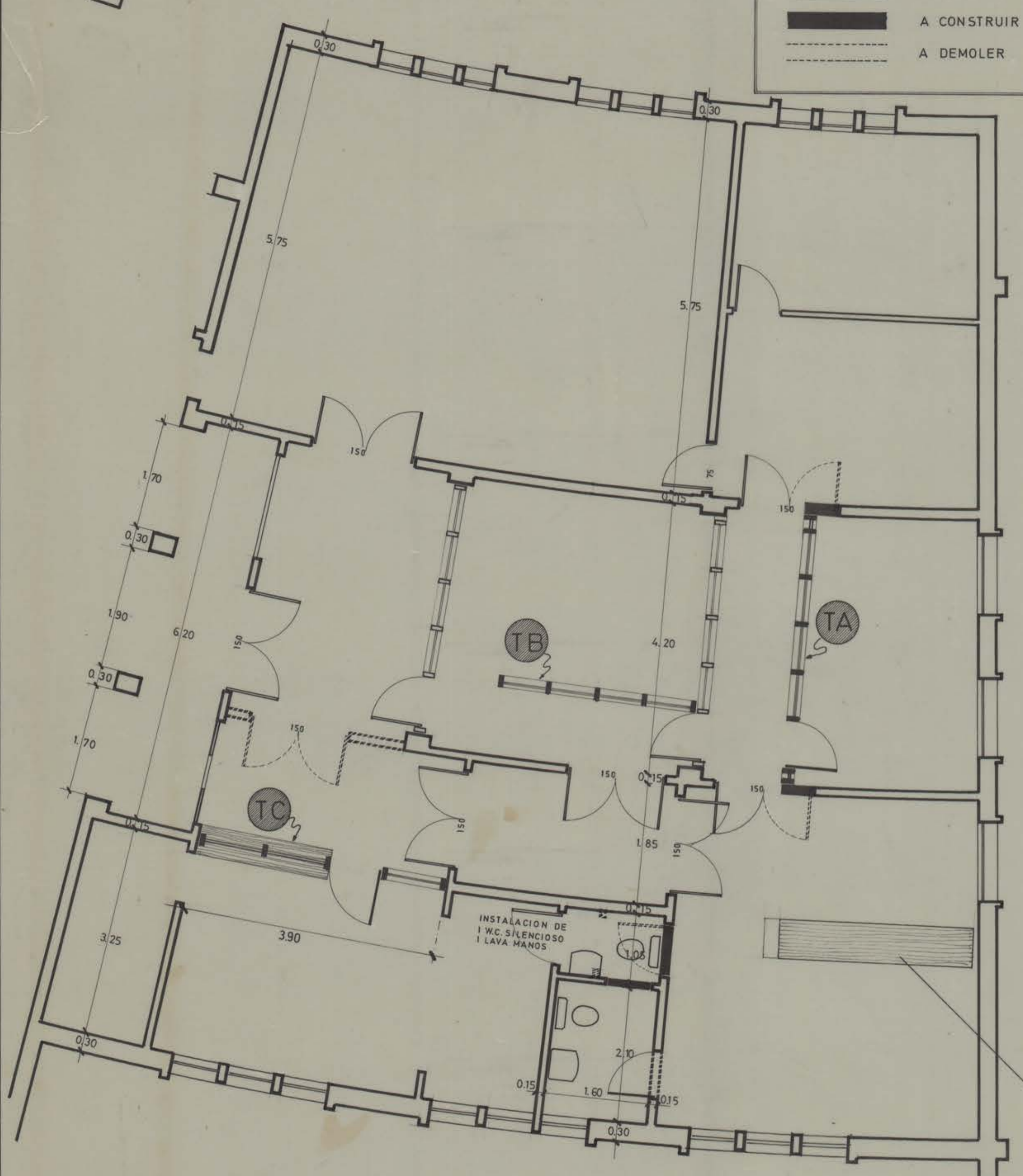


——— EXISTENTE
 ——— A CONSTRUIR
 - - - A DEMOLER



INGENIERIA Y MANTENCION UNIVERSIDAD DE CONCEPCION
 OBRA ESCUELA DE MEDICINA DIRECCION
 L-147
 116-74
 ALEX HARTWIG E. AROTO JEFE PEDRO TAGLE M. AROTO. PROYEC. ABEL ZAFATA C. PISUANTE

CT PACC WPCO 008-W79-001 BPN WPCO DICEFEN 09-08-A-147