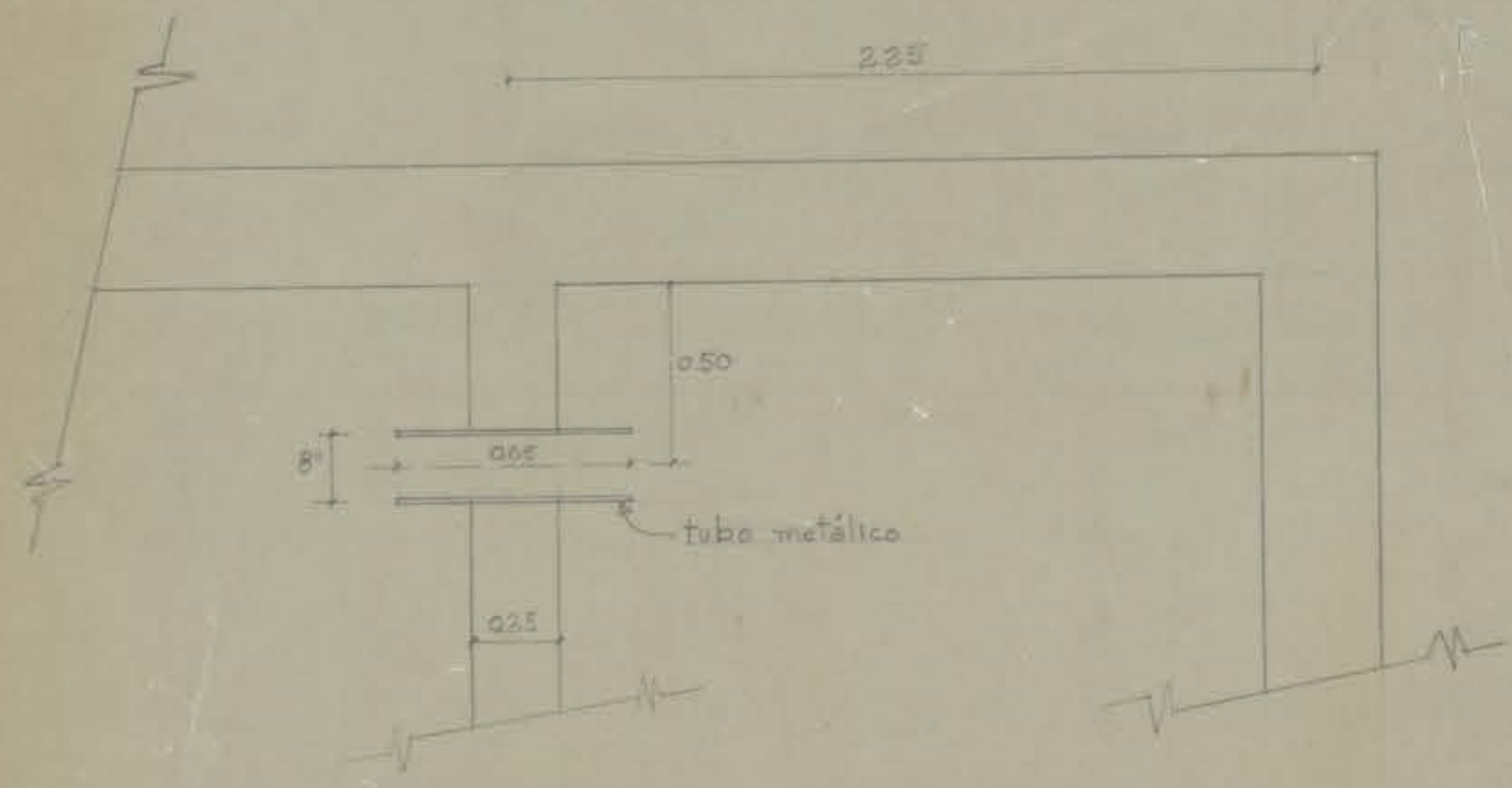
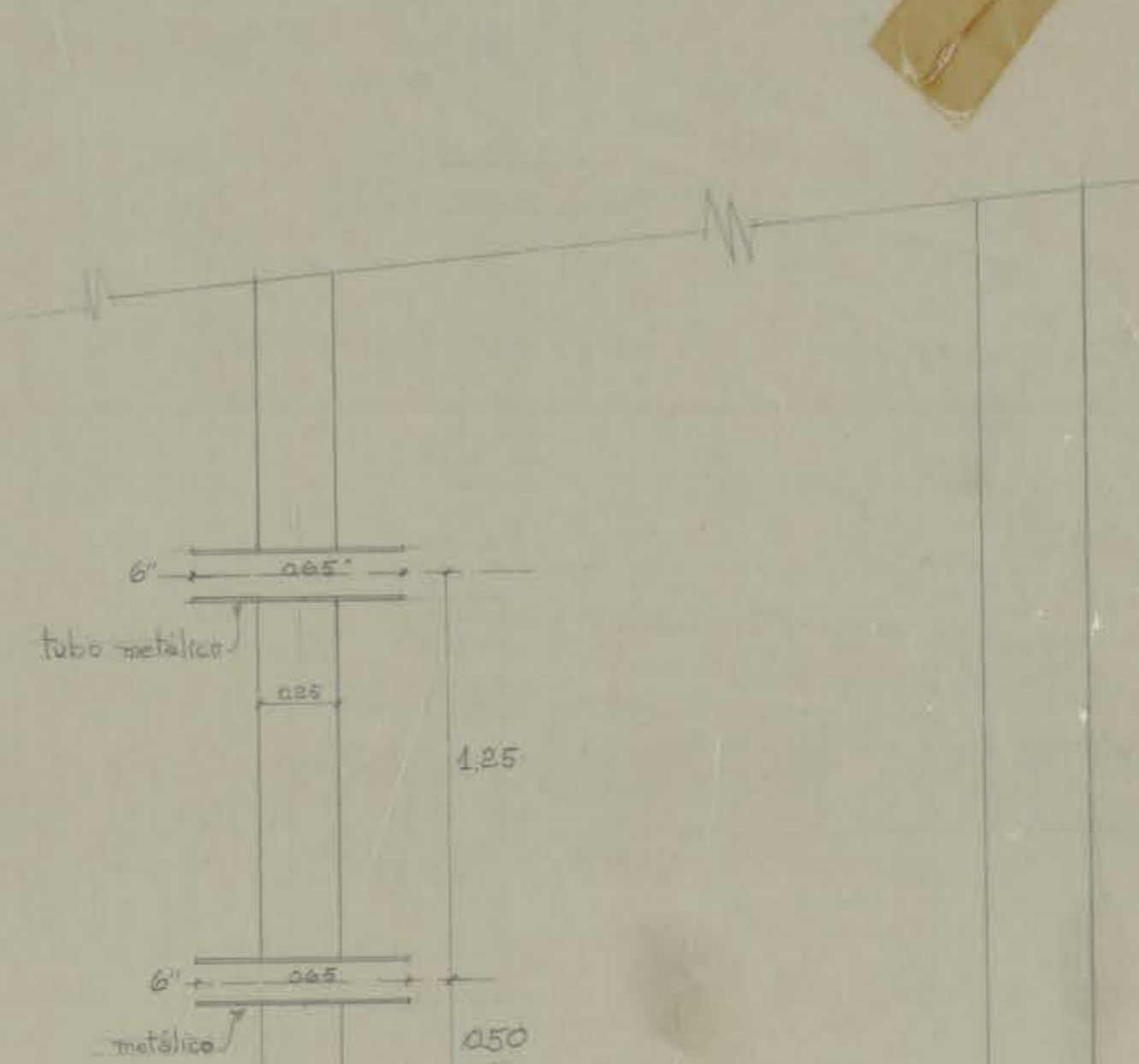


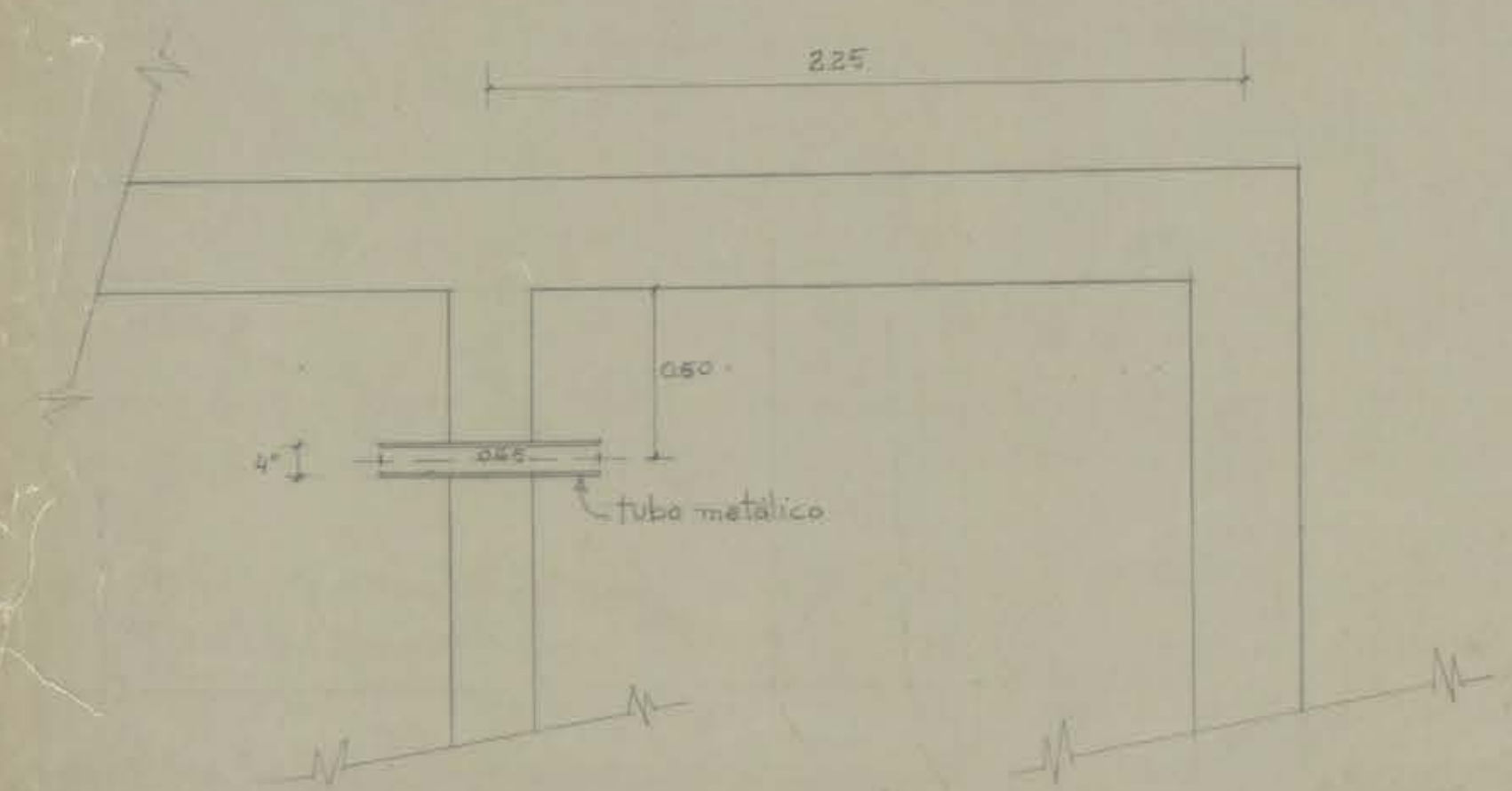
DETALLE PLANTA A-A PASADA DE 8"



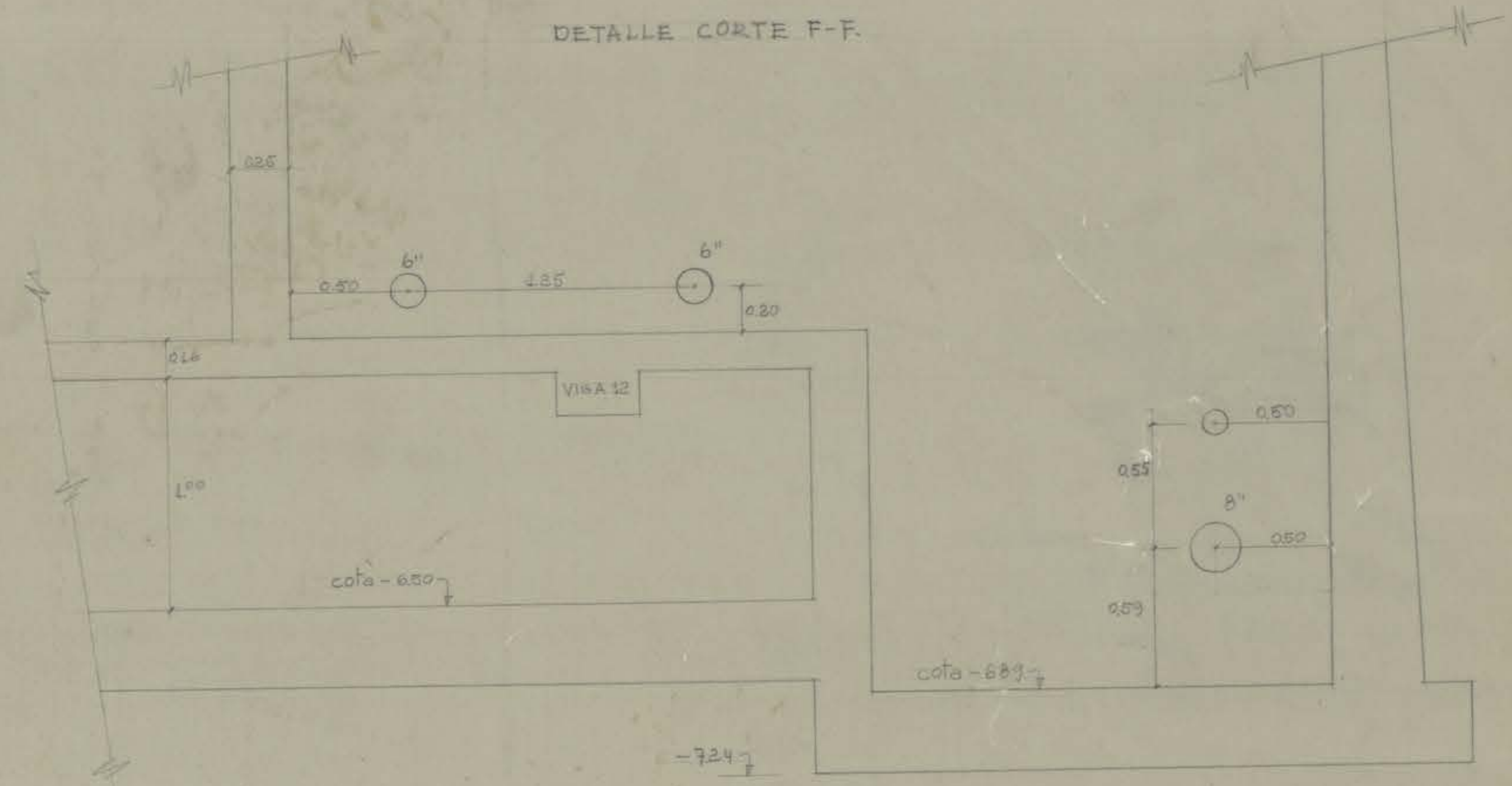
DETALLE PLANTA B-B PASADAS DE 6"



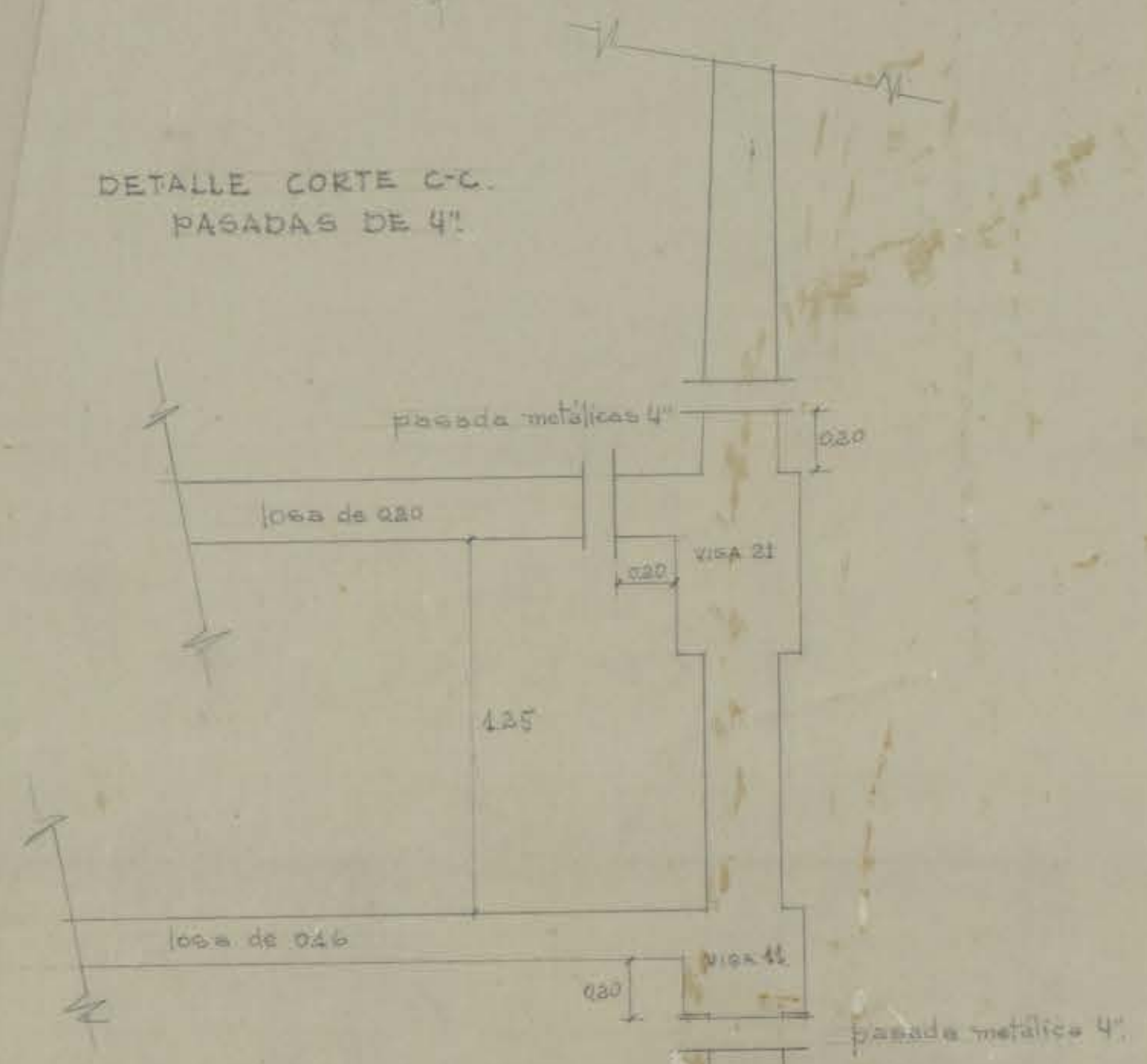
DETALLE PLANTA A-A PASADA DE 4"



DETALLE CORTE F-F



DETALLE CORTE C-C PASADAS DE 4"



UNIVERSIDAD DE CONCEPCION.  
 CAMARA DE REGULACION.  
 DREN Y AGUAS LLUVIAS FORO.  
 PASADAS DE CAÑERIAS. ESC. 1:20.  
 25-ENERO-1960. ING. CARLOS GUZMAN.

*Carlos Guzman*

Ka1

OR RECC WROD 008 W46-004 6M REC MREEM/K - E - 018